



Empowering hospitalists.
Transforming patient care.

Rapid Clinical Updates: Cardio-Renal-Metabolic Disease and Care Models for Hospital Medicine

Speakers

Muthiah Vaduganathan, MD, MPH

*Cardiologist, Brigham and Women's Hospital
Faculty, Harvard Medical School*

Ebrahim Barkoudah, MD, FACP, MPH, SFHM

*System Chief of Hospital Medicine, Regional Chief Medical Officer, Chief Quality
Officer, Baystate Health*

Lily Ackermann, ScM, MD, FACS, SFHM

*Clinical Associate Professor of Medicine
Division of Hospital Medicine, Thomas Jefferson University*

Dr. Lily Ackermann, ScM, MD, FACS, SFHM

- Clinical Associate Professor of Medicine, Thomas Jefferson University Hospital
- Section Lead, Co-Management and Faculty Development
- SHM Education Committee member



Dr. Ebrahim Barkoudah, MD, FACP, MPH, SFHM

- System Chief and Regional Chief Medical and Chief Quality Officer
- System Chief Hospital Medicine
- SHM Education Committee Member
- Baystate Health

COI: Over the past 3 years, Dr. Barkoudah reports research support payments from Bristol Myers Squibb, payments made to Brigham and Women's Hospital for performing clinical endpoints sponsored by various entities, payments from WebMD, and Advisory Board fees from Medscape, Novartis, and Gilead. Past Editor in Chief, Journal of Clinical Outcomes Management. Member of multiple national committees. All outside the current presentation.



Dr. Muthiah Vaduganathan, MD, MPH

- Co-Director, Center for Cardiometabolic
- Implementation Science
- Cardiologist, Clinical Trials Specialist
- Associate Editor of JACC and as US national ambassador to the ESC Heart Failure Association
- Brigham and Women's Hospital and Harvard Medical School, Boston, US



COI: Dr. Vaduganathan reports Consultant and/or Advisor for American Regent; Amgen; AstraZeneca; Bayer AG; Baxter Healthcare; Boehringer Ingelheim; Bristol Myers Squibb; Chiesi; Cytokinetics; Fresenius Medical Care; Idorsia Pharmaceuticals; Lexicon Pharmaceuticals; Merck; Milestone Pharmaceuticals; Novartis; Novo Nordisk; Pharmacosmos; Relypsa; Roche Diagnostics; Sanofi; and Tricog Health. Grant/Research Support from Amgen; AstraZeneca; Bayer AG; Galmed; Impulse Dynamics; Novartis; and Occlutech.

Disclosures

All speakers and planners have no relevant financial or advisory relationships with corporate organizations related to this activity, apart from those already disclosed, none of which could be perceived as a real or apparent conflict of interest.



Explore more clinical content tailored to your practice.

With an SHM Membership, you'll have access to:

- CME & MOC
- Clinical Quick Talks
- Educational Resources
- Publications
- Networking with Peers through Special Interest Groups

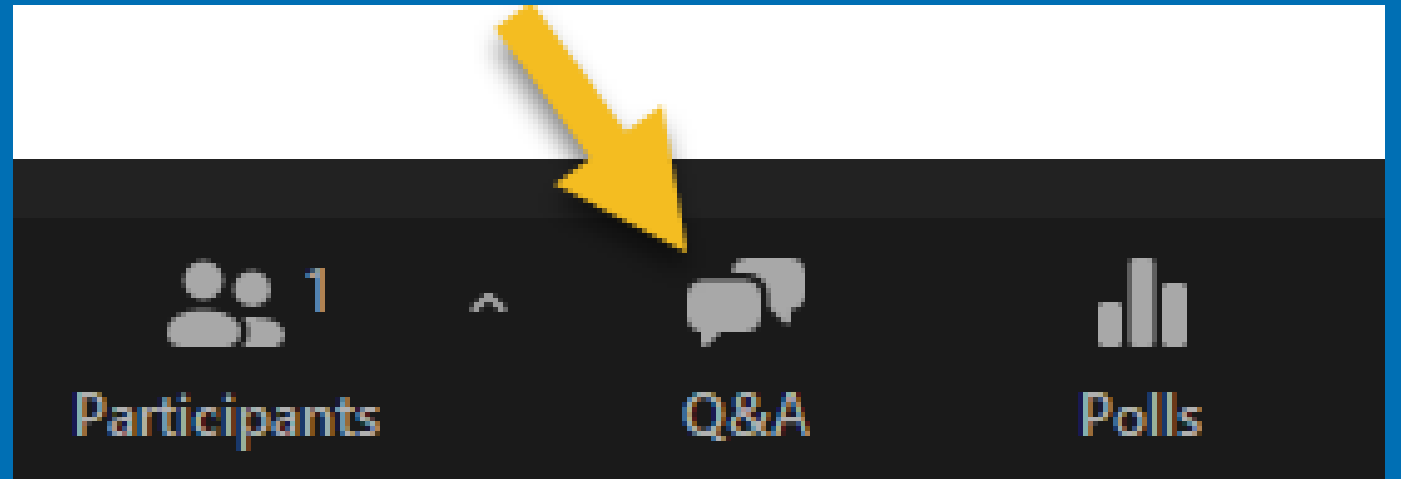
Join today and save **10% on membership**
with code **RCU10** at checkout.



hospitalmedicine.org/join

Please submit questions using Q&A feature

We will have Q&A time after





POLL QUESTIONS

Question 1:

What are the four pillars of treatment in cardiometabolic kidney disease?

- A) RAS inhibitors (ACE inhibitors, ARBs), SGLT2 inhibitors, GLP-1 receptor agonists, and nsMRAs.
- B) RAS inhibitors (ACE inhibitors, ARBs), SGLT2 inhibitors, beta-blockers, and any MRAs.
- C) SGLT2 inhibitors, beta-blockers, and any MRAs.
- D) RAS inhibitors (ACE inhibitors, ARBs), metformin, beta-blockers, and any MRAs.

Question 2:

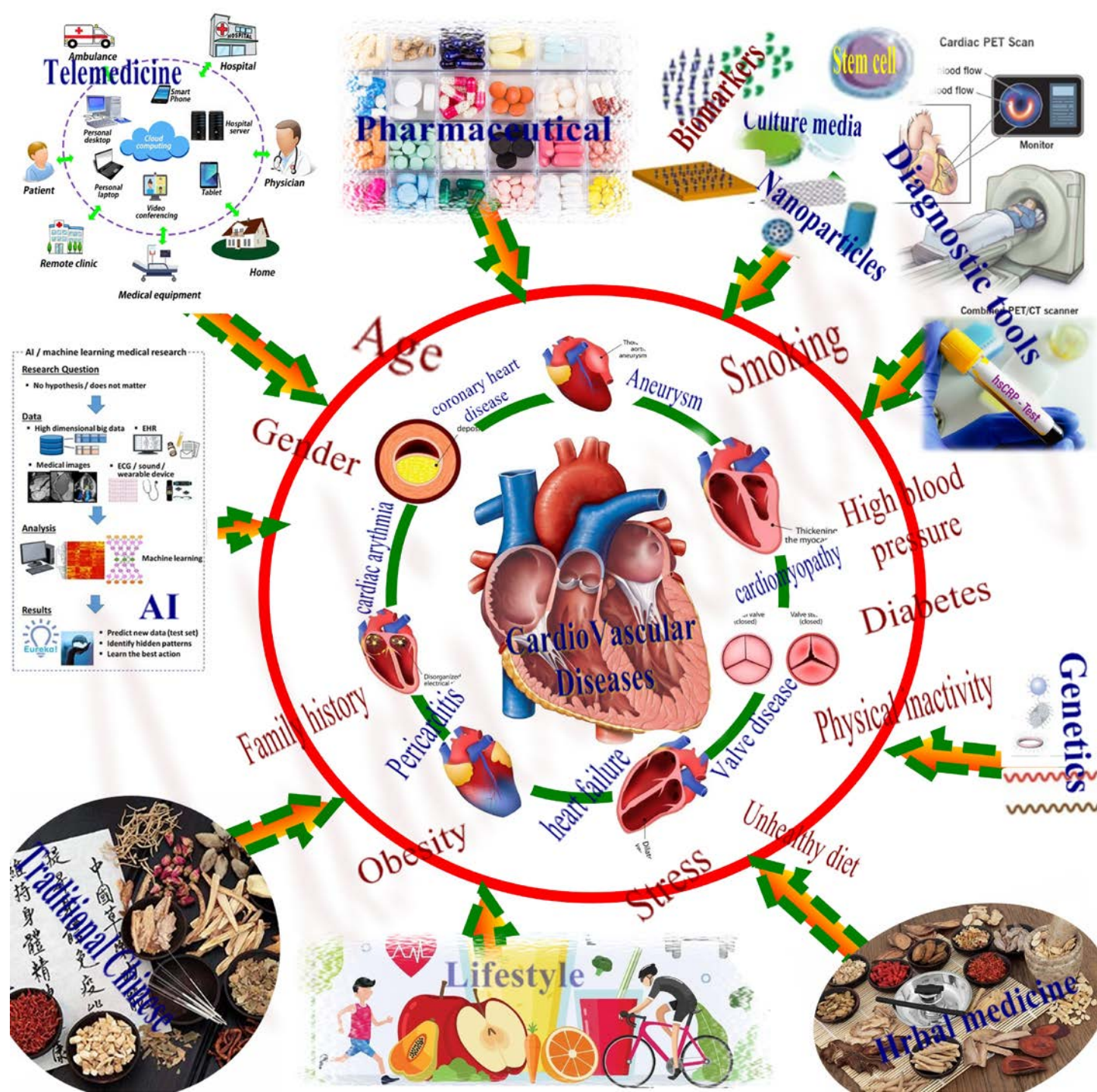
If a patient has a serum potassium 4.5-5.0 mmol/L, they should not be prescribed nsMRAs due to arrhythmia risks

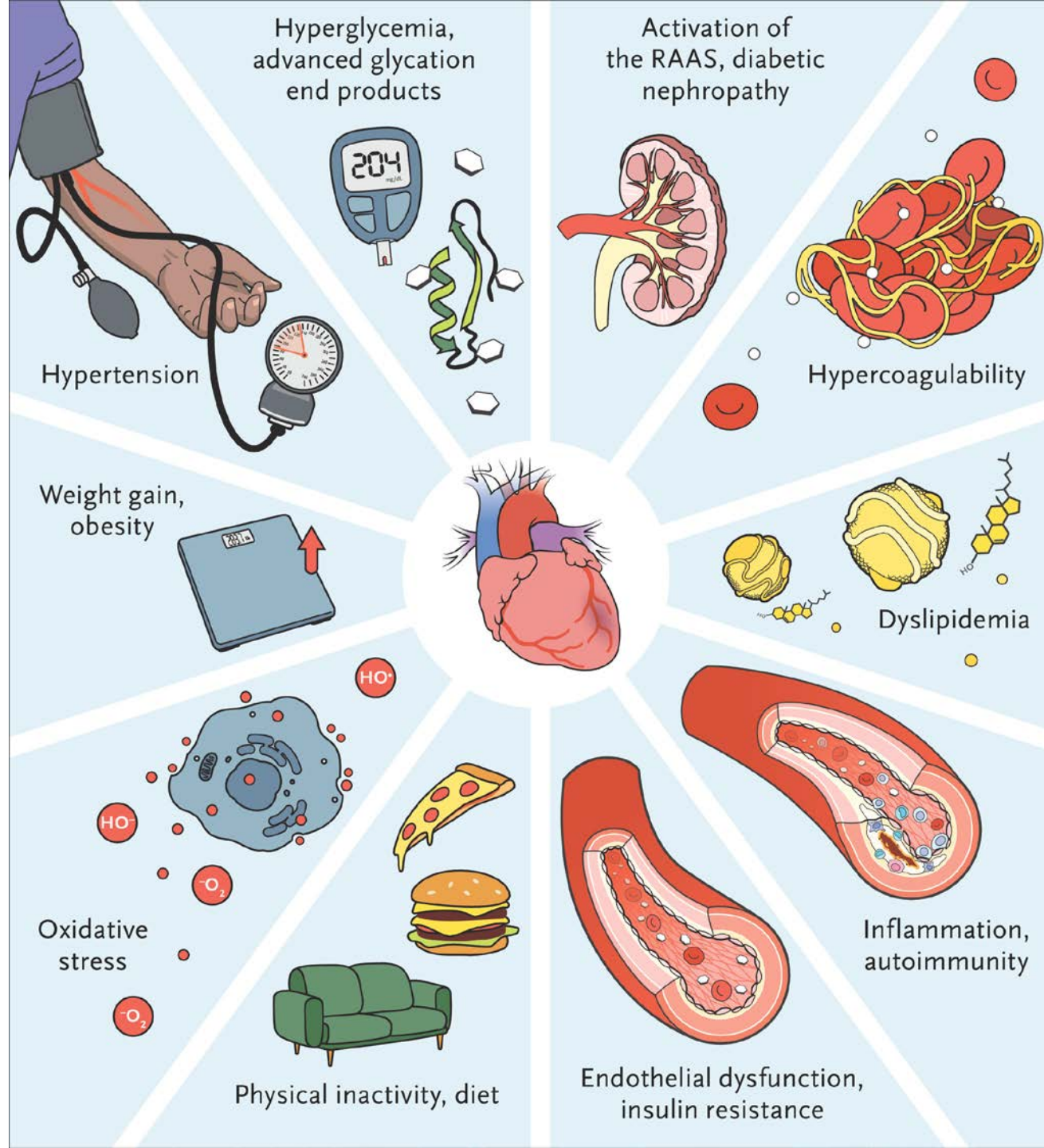
- A) True
- B) False

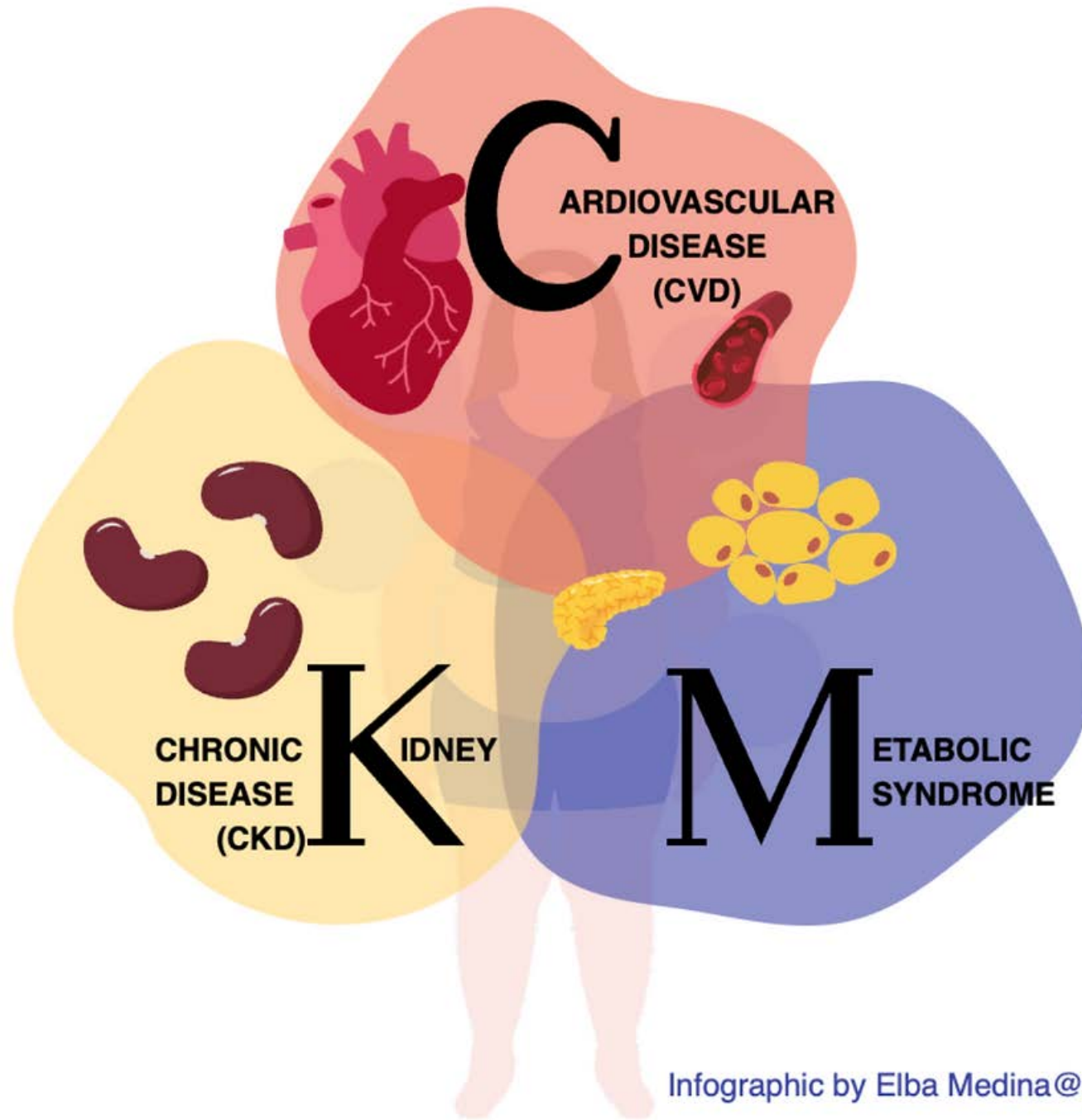


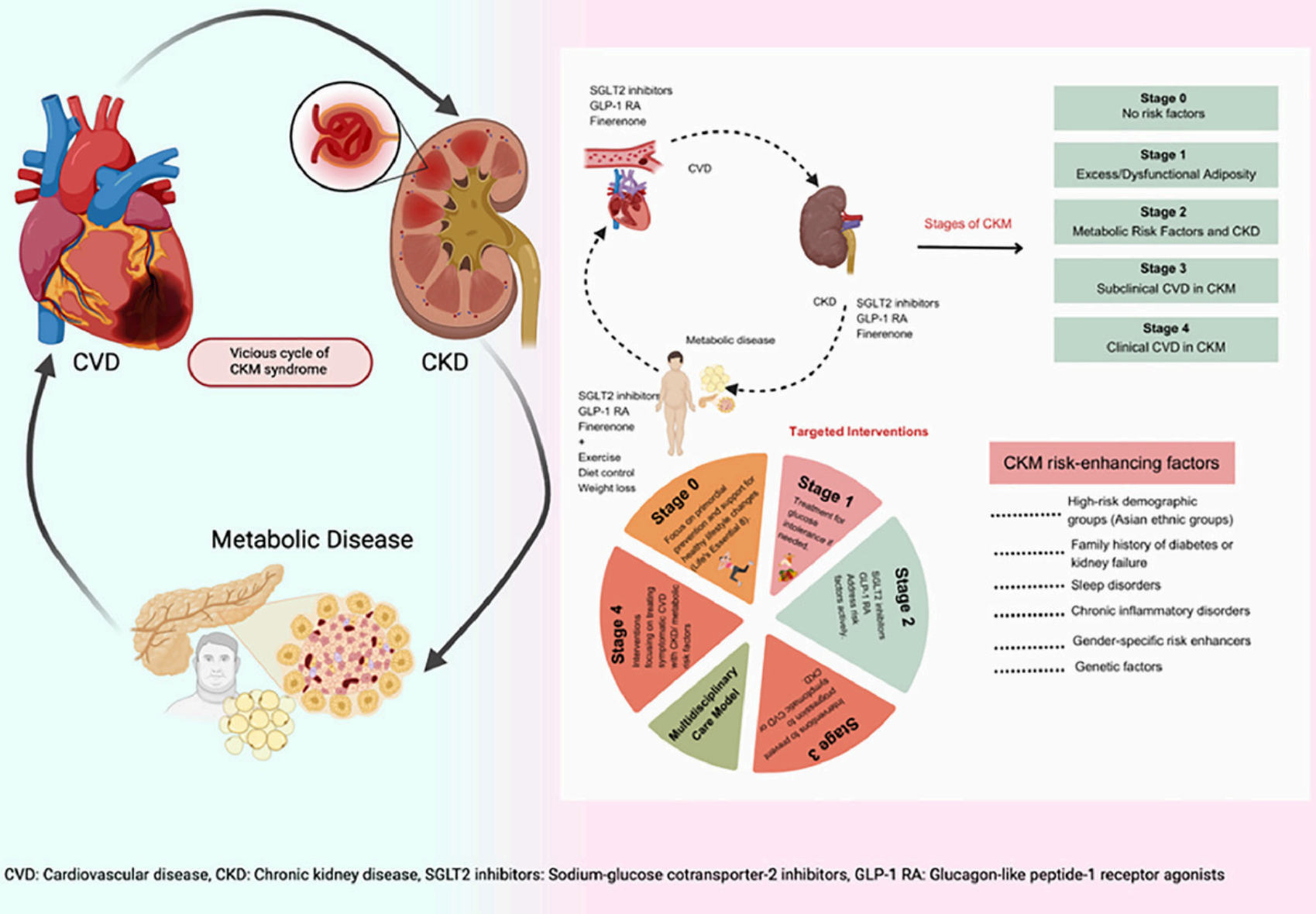
Empowering hospitalists.
Transforming patient care.

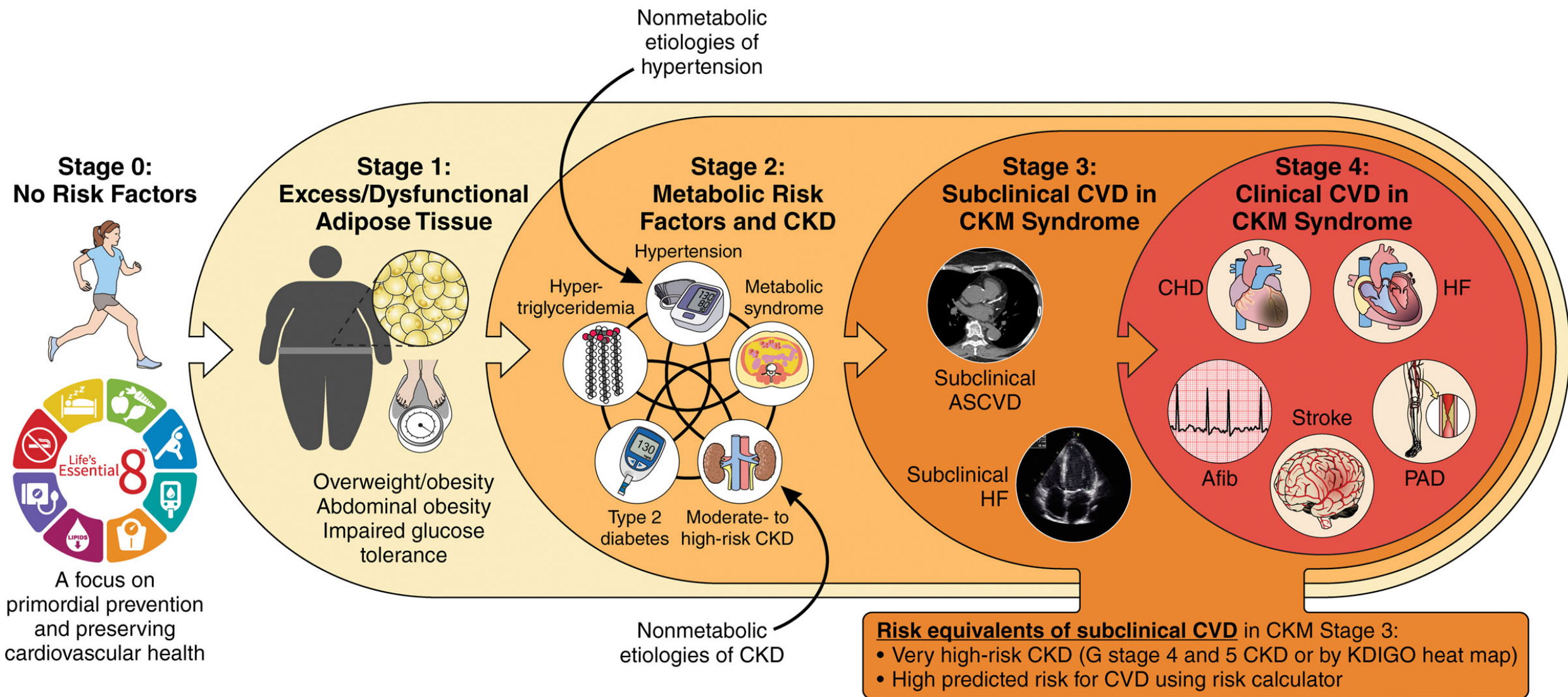
Rapid Clinical Updates: Cardio-Renal-Metabolic Disease and Care Models for Hospital Medicine

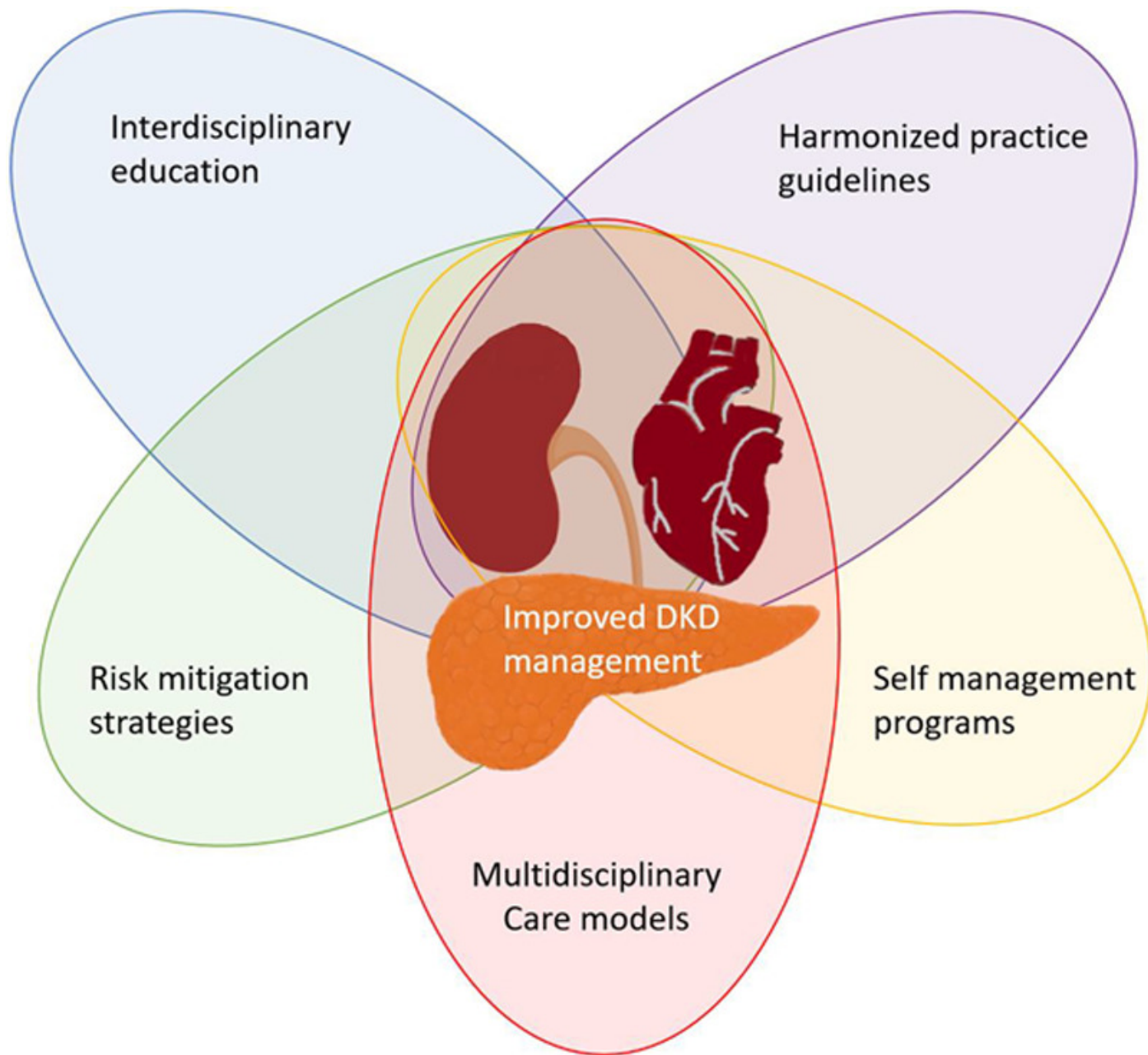




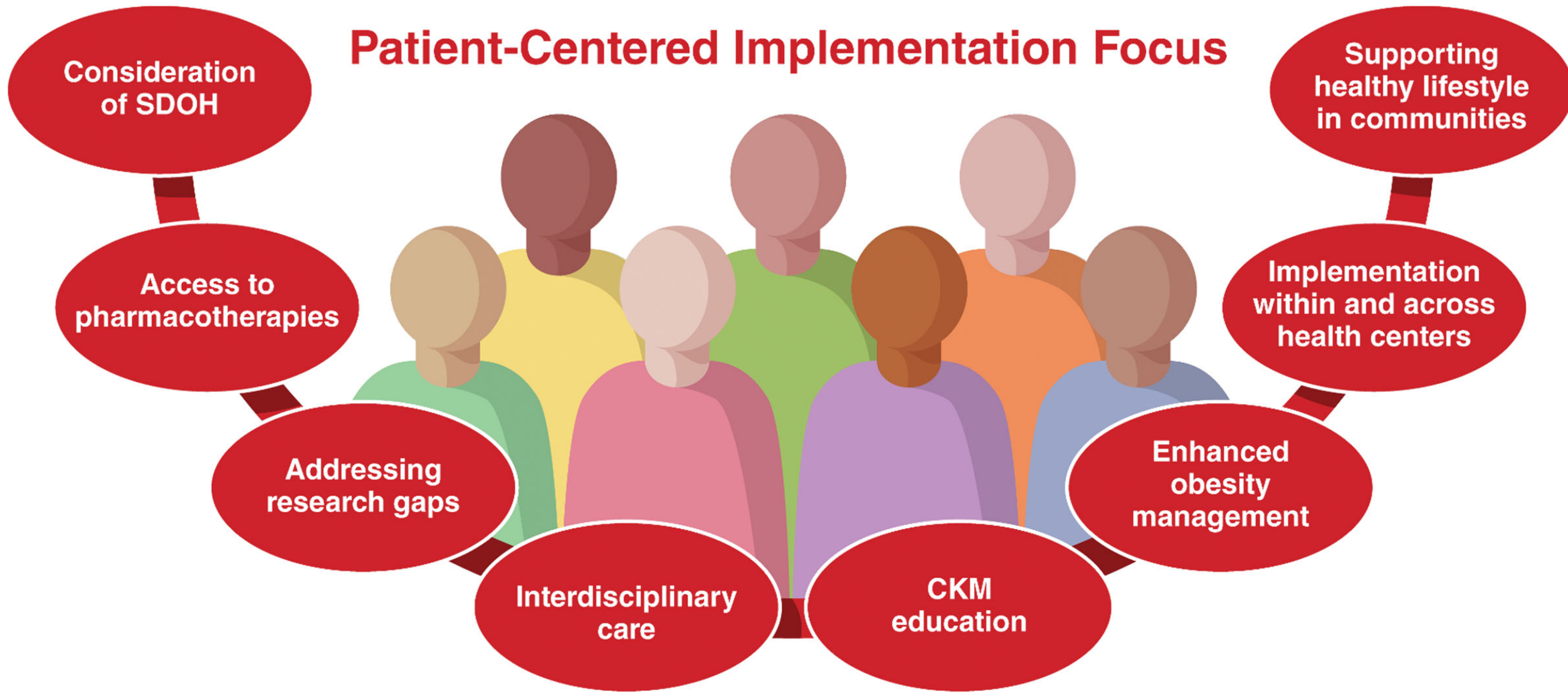








Patient-Centered Implementation Focus



Question 1

How have the landmark trials of SGLT2 inhibitors transformed our understanding of these therapies from purely antihyperglycemic agents to cornerstone therapies in cardiorenal protection, and what are the key clinical implementation lessons for patient selection across the cardiorenal continuum?

Question 2

Based on the findings from trials such as CONFIDENCE, what practical framework can clinicians use to optimize combination therapy with SGLT2 inhibitors and MRAs across the spectrum of cardiorenal disease, particularly in patients with moderate to advanced CKD?

Question 3

How should the positive findings from trials such as STRONG-HF influence our approach to initiating and sequencing evidence-based cardiorenal protective therapies during hospitalization, and what monitoring protocols best ensure safe implementation of these trial results into clinical practice?

Care Transitions and Discharge Planning

- Medication bridging protocols for transitioning between inpatient and outpatient regimens
- Standardized discharge planning/arrangements
- Education regarding adherence and lifestyle modifications
- Care coordination with outpatient specialists/PCP
- Implementation Strategies
- Quality Improvement Initiatives

Developing standardized protocols and clinical pathways to improve CKM care delivery

- EHR integration for systematic screening and risk assessment
- Clinical decision support tools to guide medication selection and dosing
- Performance metrics tracking CKM-specific outcomes and QI measures
- Management must integrate Social Drivers of Health and Health-Related Social Needs screening and intervention.
 - Systematic screening using validated tools
 - Integration into clinical workflows
 - Leveraging community resources and programs

- Value-based care approaches that reward outcomes rather than volume of services may facilitate broader adoption of CKM syndrome management models .
- The successful implementation of CKM syndrome care models in hospital medicine depends on systematic organizational change, provider education, technology integration, and policy support to create sustainable, patient-centered care delivery systems that improve outcomes for this high-risk population